

Presentation Overview

Speaker:

Ilse Ruyssen

- I. Introduction CliMigHealth
International Thematic Network
- II. Debriefing focus group
discussions among primary care
givers (PRIMAFAMED conference
2019)
- III. Call for participation for new study
on capacity building in primary
care

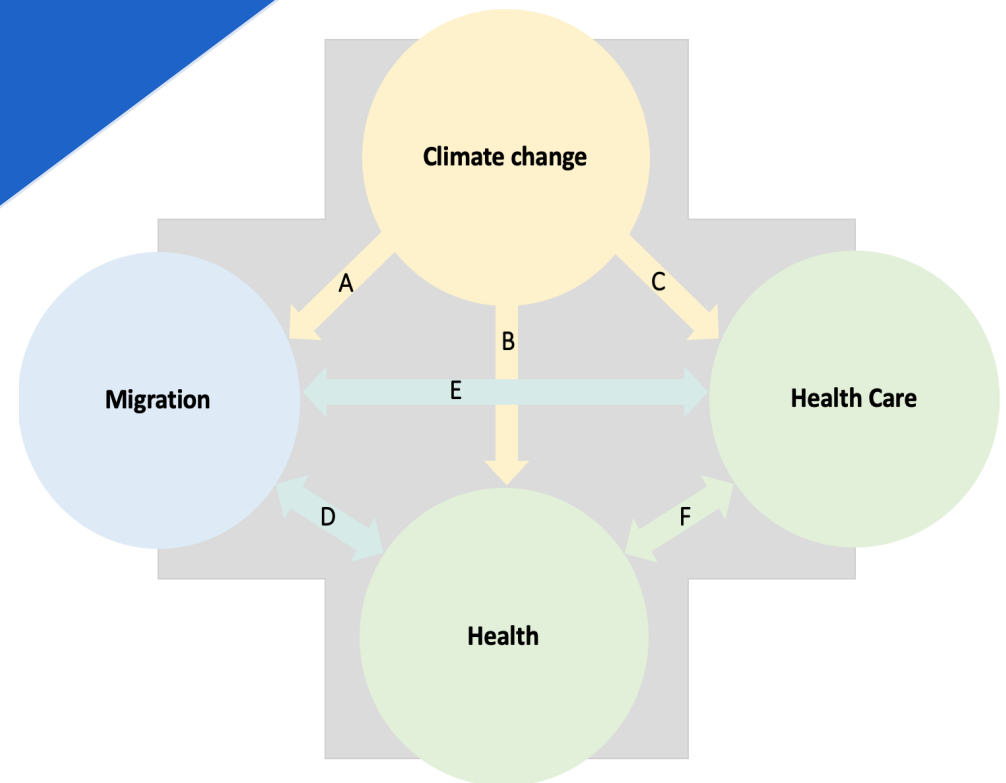
I. International Thematic Network on **Climate-Migration-Health(care)** Ghent University

CliMigHealth

Coordinator: ILSE RUYSEN

Operational manager: CHARLOTTE SCHEERENS

2020-2025



Long term goals

Make CliMigHealth a **pioneering center of excellence** on this underexplored nexus by

- ▷ **integrating Ghent University's academic expertise on the nexus** to develop guiding research and policy frameworks
- ▷ **strengthening own and partner's interdisciplinary capacity in developing comprehensive and sustainable responses** (research, policy recommendations and capacity building)

CliMigHealth = **collaborative platform** to

- ▷ strengthen existing networks (a.o. PRIMAFAMED) and establish new ones
- ▷ scale up their interdisciplinary collaboration

to further explore and connect the key elements within the nexus to **address the complex migration and health(care) issues arising from climate change**

30 Partners

13 Ghent University
promotors from 6 faculties

 FACULTY OF
BIOSCIENCE ENGINEERING

 FACULTY OF ECONOMICS AND
BUSINESS ADMINISTRATION

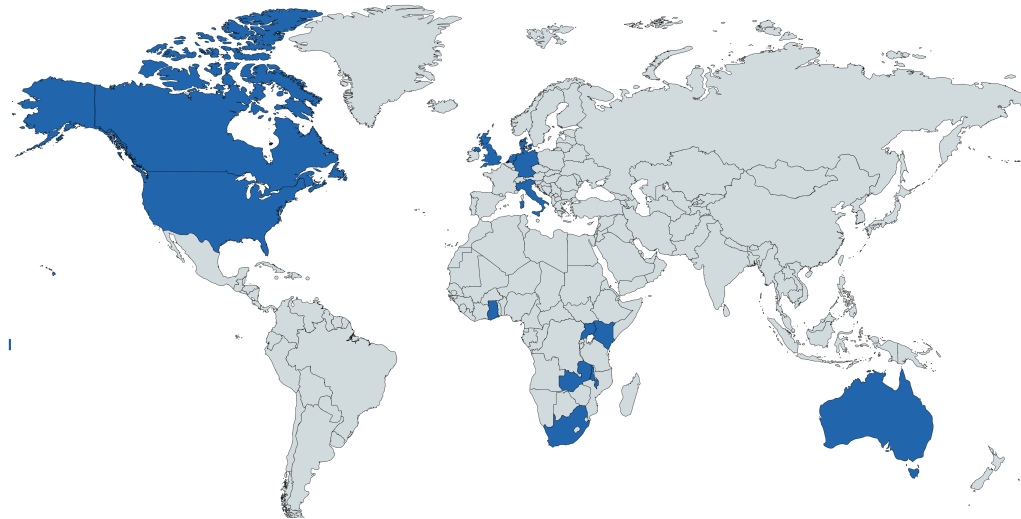
 FACULTY OF MEDICINE
AND HEALTH SCIENCES

 FACULTY OF PSYCHOLOGY
AND EDUCATIONAL SCIENCES

 FACULTY OF POLITICAL
AND SOCIAL SCIENCES

 FACULTY OF
LAW AND CRIMINOLOGY

17 International partners from
14 countries



Planned Cooperation & Activities



RESEARCH

- Extend inter- and multidisciplinary research on the nexus among CliMigHealth partners
- Active cooperation with underrepresented Global South partners
- Joint research projects, articles, conferences, staff mobility



EDUCATION

- Foster transfer of knowledge through summer schools and international PhD symposia
- Encourage joint PhD's (including African universities) and co-supervision of PhD and MsC students



SERVICES TO SOCIETY

- Offer scientific and policy advice to government officials and policymakers
- Organise participatory evidence-based knowledge-transfer with civil society organisations
- Provide scientific input for the public, NGOs and activist organizations

Position of PRIMAFAMED in CliMigHealth

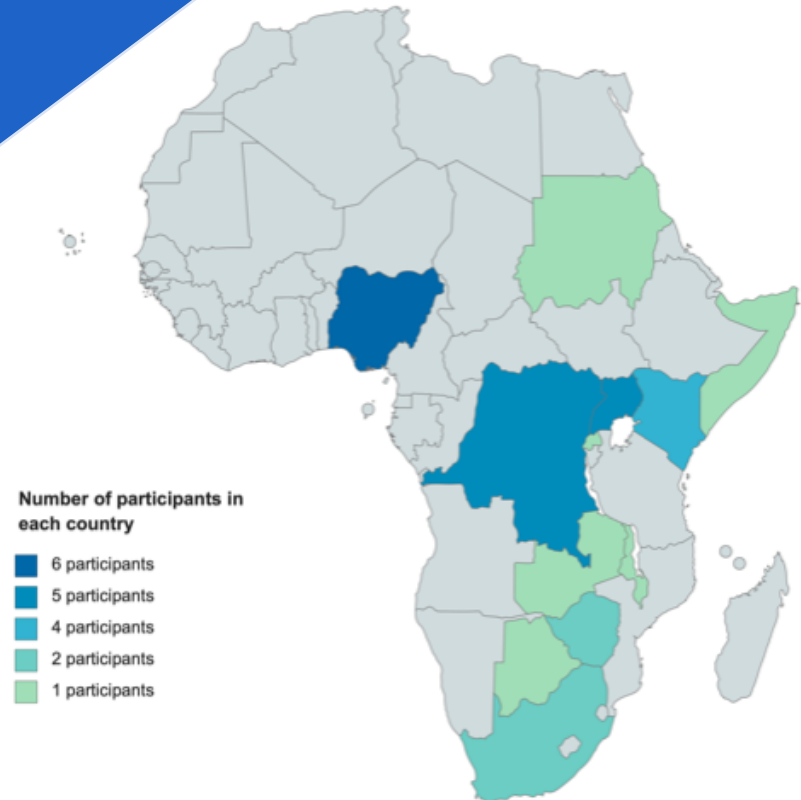
- ▷ What CliMigHealth has to offer PRIMAFAMED
 - funding for staff and student mobility
 - research collaboration
 - direct interaction: your input gets translated in research proposals
- ▷ Why CliMigHealth needs PRIMAFAMED
 - Research collaboration
 - Need for implementation partners to translate academic research to clinical practices and health policy

Questions? Comments?



II. Debriefing focus group discussions among primary care givers

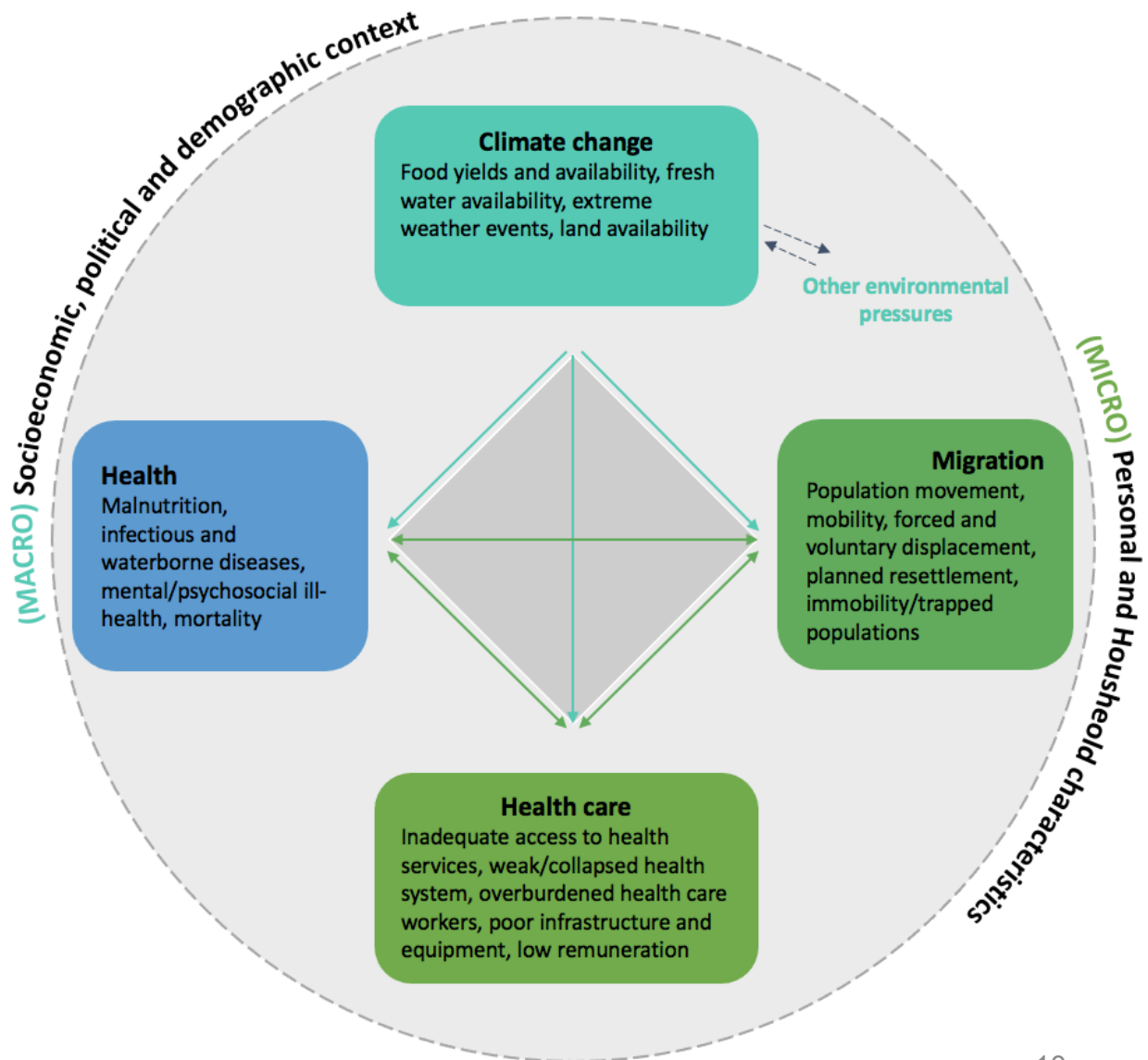
(PRIMAFAMED conference 2019)



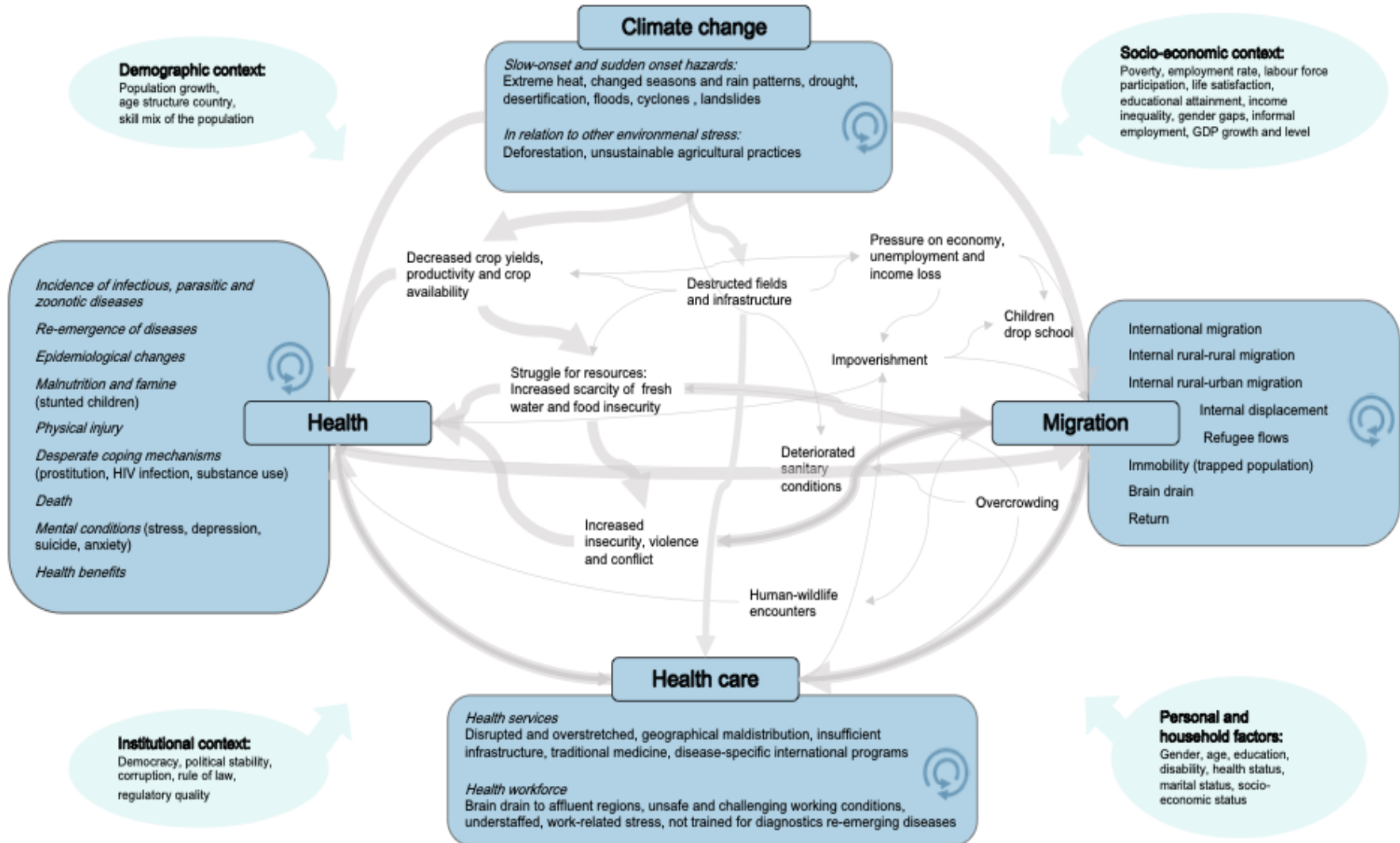
Primary caregivers perspectives on the nexus between climate change, migration and health(care) in SSA

1. Scheerens, C., Ruysen, I., Ray, S., De Sutter, An, Vanhove, W., Bekaert, E., Mash, B., Decat, P., and J. De Maeseneer (2020) Tackling adverse health effects of climate change and migration through inter-sectoral capacity building in Sub-Saharan Africa. *British Journal of General Practice Open*
DOI: [10.3399/bjgpopen20X101065](https://doi.org/10.3399/bjgpopen20X101065)
2. Scheerens, C., Bekaert, E., Ray, S., Essuman, A., Nyamu, N., Decat, P., De Sutter, A., Van Damme, P., Vanhove, W., Lietaer, S., De Maeseneer, J. and I. Ruysen (2020) Primary caregiver perspectives on the climate change, migration, and health(care) nexus in sub-Saharan Africa.

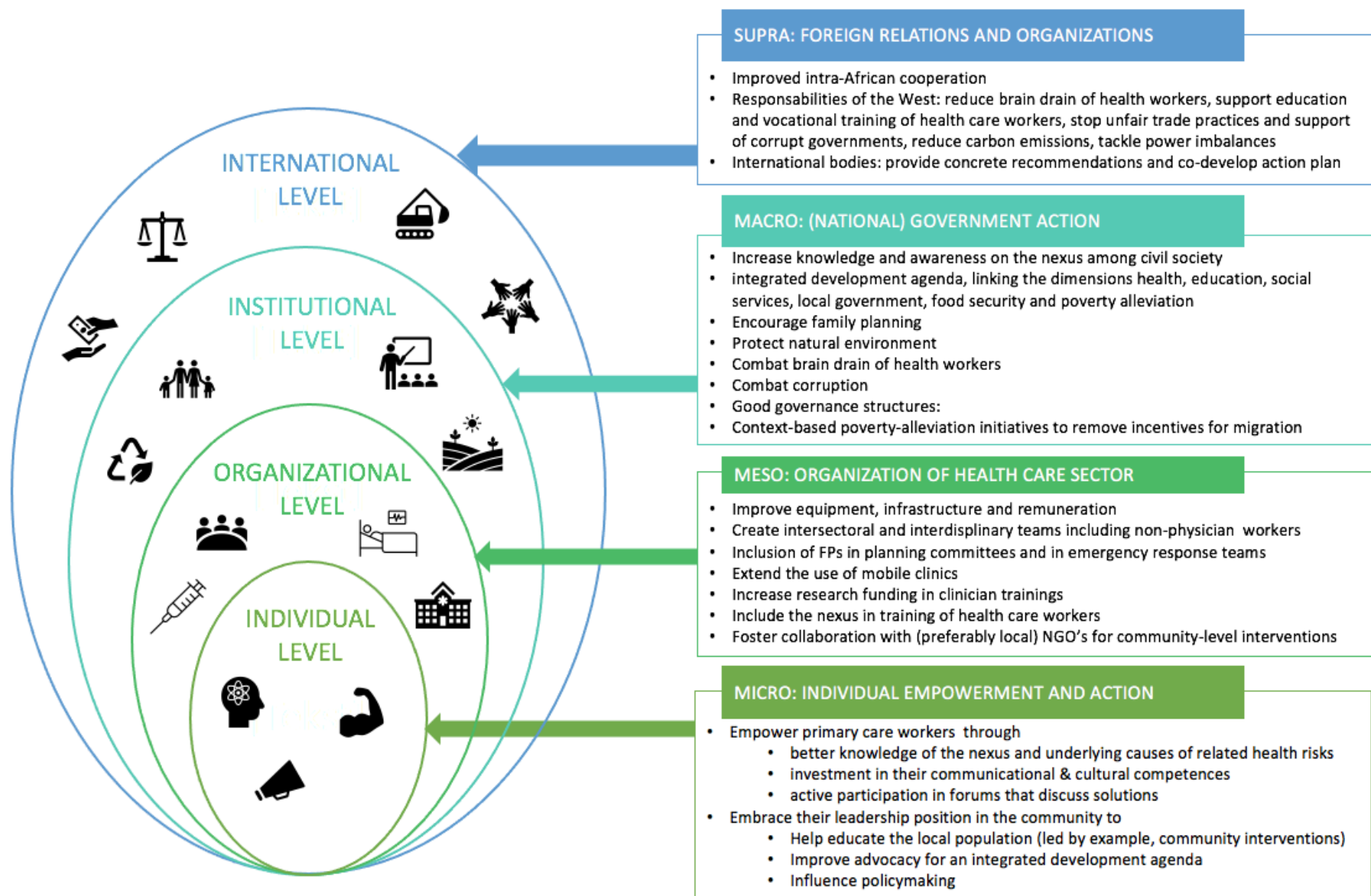
Departure point:
framework
derived from
the existing
literature



A comprehensive framework for sub-Saharan Africa



Capacity building framework



Main takeaways related to the nexus

- ▷ Results mostly **in line with previous studies**
 - Our results indeed point out that when assessing climate-related health risks, the indirect impact that may arise from climate-induced migration should always be considered (see also McMichael, 2020)
- ▷ But our approach allows for a more pronounced **position of other (social) determinants of health** related to climate change and migration
- ▷ We suggest to analyse the interactions as a **myriad of continuous feedback loop mechanisms** rather than following a unidimensional structure
e.g. from climate change → migration → health
- ▷ **Complexity theory or complex adaptive system theory** may be appropriate methods to study this

Main takeaways related to capacity building

Given the importance of climate-resilient health systems in the nexus' context, our study explored the potential of primary care within an **intersectoral capacity building program**.

Main findings:

1. **Curricula should explicitly include:**
 - knowledge and management of the health implications of environmental crises such as flooding, cyclones
 - mental health difficulties related to climate emergencies and relocation of people
2. More intense **involvement of FPs and primary caregivers in emergency planning and preparedness committees** would contribute to a better anticipation and protection of such health needs
3. **Improved documentation** of the lived experience of the impact of population movements on health infrastructure and health outcomes is critically important
4. FPs and primary caregivers can **contribute towards research agendas and policy responses** on national, regional, and global platforms, recognising the urgency of the situation and standing up for how to be actively involved in changing it

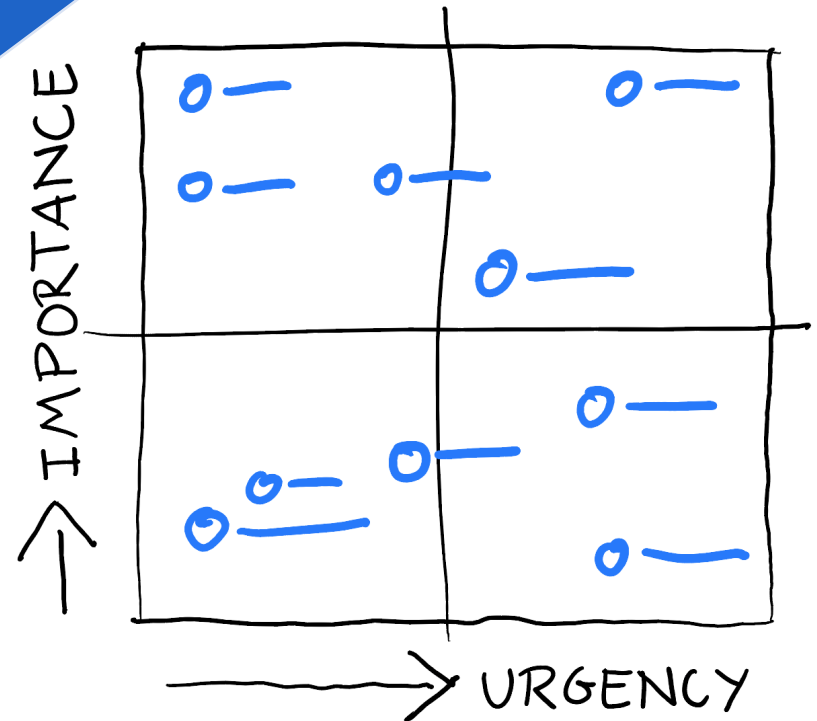
Questions?
Comments?



III. Study on inter-sectoral capacity building in primary care

Call for participants!

Engagement and Prioritization Exercise



Aim of the study

Engagement Mapping and Prioritization exercise:

- ▷ to identify **intersectoral and primary care capacity building priorities to enable the most effective resource allocation**
- ▷ to **reduce health inequities related to climate change and migration in Africa**

This study is

- ▷ part of a strategic partnership between Ghent University and the University of Toronto
- ▷ and involves collaboration between members of the International Thematic Network CliMigHealth

Call for participants

We would like to invite you all by
Mid November 2020 to participate in:

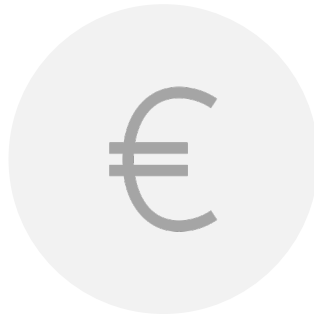
- **Two short surveys** containing structured and open-ended questions (> 100 participants)
- **A virtual workshop** (30 participants, Feb 2021, approximately 90 minutes)



Practicalities



Anonymity and
compliance with
GDPR ensured



Financial
compensation for
workshop
participation



Interested in workshop?
Contact Charlotte
Scheerens
(Charlotte.Scheerens@ugent.be)

Questions?
Comments?



Prof. Ilse Ruysen, PhD
Charlotte Scheerens, PhD

Department of Economics, Ghent University

E ilse.ruysen@ugent.be

E charlotte.scheerens@ugent.be

www.ugent.be